

International Journal of Innovative Research in Science, Engineering and Technology

(A High Impact Factor, Monthly, Peer Reviewed Journal)

Visit: www.ijirset.com

Vol. 7, Special Issue 2, March 2018

Rating Prediction using Review Texts with Underlying Sentiments

D.L.K Vijai Bharrath , R.Sathyaramesh, P.Gopikrishna , R.Udhyakumar

Department of Information Technology, Velammal Institute of Technology, Chennai, Tamil Nadu, India

ABSTRACT: Recommender systems typically produce a list of recommendations to precisely predict the user's preference for the items. For this purpose, latent factor models, such as matrix factorization, are usually employed to find latent factors that can characterize both users and items by observed rating scores. Recently, online user feedback accompanied with review texts has become increasingly common. The review texts contain not only user's attention to the situation of the different aspects of items, but also users' sentiment towards different aspects of specific items. However, traditional latent factor models often ignore such review texts, and therefore fail to characterize users and items precisely. Furthermore, although some current studies do employ review texts, many of them do not consider how sentiments in reviews influence the rating scores. In this project, we propose an extended Hidden Factors as Topics Model(HFT) (a model combining the Latent Factor model and the Latent Dirichlet Allocation) based on Aspect and Sentiments Unification Model(ASUM) (an extended topic model), called Ratings Are Sentiments(RAS). By combining user's sentiments in review texts and their rating scores, our model can learn more precise latent factors of users and items compared with the baseline models. The extensive experiments on large, real-world datasets demonstrate that the RAS model performs better than both the latent factor model and the HFT model and alleviates the cold-start problem to some extent.

I. INTRODUCTION

With the proliferation of Web applications, users are expressing their opinion and experiences on blogs, discussion boards, reviews, social networking websites etc. this trend has increased the demand of analyzing this online content resulting into increase in the opinion analysis research. User opinion analysis is important for companies and users to know what people think about specific topic. Companies can improve their products, based on user opinion. Users can take purchasing decision based on reviews about the product. User opinion analysis is to recognize whether a given text express positive or negative polarity.

Recognizing polarity in text requires polar words like good, bad, excellent etc. these polar words are key indicators for creating machine learning model for sentiment classification. And, other lexicon based approaches aggregates the semantic orientation values of these polar words to calculate the overall user opinion of the document. But, sometimes, these individual polar words are incapable of incorporating actual sentiment of the text. Individual words can have different polarity for different domains. For example, unpredictable word may have a negative polarity in automobile review, with phrase unpredictable steering, but it could have positive polarity for movie review with the phrase unpredictable story. Therefore, contextual and syntactic information is important for user opinion analysis.

MODULE DESCRIPTIONS

1. User profiling
2. Product administration
3. Capturing users opinions
4. Mapping opinion targets
5. Visualize opinion rankings

International Journal of Innovative Research in Science, Engineering and Technology

(A High Impact Factor, Monthly, Peer Reviewed Journal)

Visit: www.ijirset.com

Vol. 7, Special Issue 2, March 2018

1) User Profiling:

User profiling is the foremost part of our project which covers the single sign on user and also registers new user to the ecommerce site. This involves maintaining user's personal information which is required to ship products at a destined time.

2) Product Administration:

This involves the admin side work wherein he deploy the products maintains the site and also track user walk through towards the site and captures end user reviews into inventory Database. Product administration involves adding new products, update product information's, deleting obsolete products from the site and other common activities etc.

3) Capturing user Opinion:

We present the main framework of our method. We regard extracting opinion targets/words as a co-ranking process. We assume that all nouns/noun phrases in sentences are opinion target candidates, and all adjectives/verbs are regarded as potential opinion words, which are widely adopted by previous methods. Each candidate will be assigned a confidence, and candidates with higher confidence than a threshold are extracted as the opinion targets or opinion words.

If a word is likely to be an opinion word, the nouns/ noun phrases with which that word has a modified relation will have higher confidence as opinion targets. If a noun/noun phrase is an opinion target, the word that modifies it will be highly likely to be an opinion word. We can see that the confidence of a candidate (opinion target or opinion word) is collectively determined by its neighbors according to the opinion associations among them. A noun/noun phrase can find its modifier through word alignment.

We additionally employ a partially-supervised word alignment model, which performs word alignment in a partially supervised framework. After that, we obtain a large number of word pairs, each of which is composed of a noun/noun phrase and its modifier. We propose the use of Support vector machine concept which clusters the word based on its priority.

4) Mapping Opinion Targets:

We finally map our feedbacks on positive and negative scale and then visualize these feedbacks in a graphical way.

II. LITERATURE SURVEY

- 1) Sentiment Classification of Review Documents using Phrase Patterns Author: Basant Agarwal, Vijay Kumar Sharma, Namita Mittal
- 2) A Context-Based Word Indexing Model for Document Summarization Author: Pawan Goyal, Laxmidhar Behera
- 3) Research on Sentiment Analysis Technology and Polarity Computation of Sentiment words. Author: Min Wang, Hanxiao Shi
- 4) Recommender Systems Handbook. Author: F. Ricci, L. Rokach, B. Shapira, P.B. Kantor

III. EXISTING SYSTEM

In previous methods, mining the opinion relations between opinion targets and opinion words was the key to collective extraction. To this end, the most adopted techniques have been nearest-neighbor rules and syntactic patterns. Nearest neighbor rules regard the nearest adjective/verb to a noun/noun phrase in a limited window as its modifier. Syntactic information, in which the opinion relations among words are, decided according to their dependency relations in the parsing tree.

International Journal of Innovative Research in Science, Engineering and Technology

(A High Impact Factor, Monthly, Peer Reviewed Journal)

Visit: www.ijirset.com

Vol. 7, Special Issue 2, March 2018

IV. PROPOSED SYSTEM

To precisely mine the opinion relations among words, we propose a method based on a monolingual word alignment model (WAM). An opinion target can find its corresponding modifier through word alignment.

We further notice that standard word alignment models are often trained in a completely unsupervised manner, which results in alignment quality that may be unsatisfactory. We certainly can improve alignment quality by using supervision. However, it is both time consuming and impractical to manually label full alignments in sentences. Thus, we further employ a partially-supervised word alignment model (PSWAM).

We believe that we can easily obtain a portion of the links of the full alignment in a sentence. These can be used to constrain the alignment model and obtain better alignment results. To obtain partial alignments, we resort to syntactic parsing.

Advantages of proposed system:

Compared to previous nearest-neighbor rules, the WAM does not constrain identifying modified relations to a limited window; therefore, it can capture more complex relations, such as long-span modified relations.

Compared to syntactic patterns, the WAM is more robust because it does not need to parse informal texts.

In addition, the WAM can integrate several intuitive factors, such as word co-occurrence frequencies and word positions, into a unified model for indicating the opinion relations among words. Thus, we expect to obtain more precise results on opinion relation identification.

The alignment model used has proved to be effective for opinion target extraction.

Algorithm:

Content based filtering algorithm: Content based filtering technique recommended systems. Collaborative filtering has two senses, a narrow one and a more general one.

In the newer, narrower sense, collaborative filtering is a method of making automatic predictions (filtering) about the interests of a user by collecting preferences or taste information from many users (collaborating). The underlying assumption of the collaborative filtering approach is that if a person *A* has the same opinion as a person *B* on an issue, *A* is more likely to have *B*'s opinion on a different issue than that of a randomly chosen person. For example, a collaborative filtering recommendation system for television tastes could make predictions about which television show a user should like given a partial list of that user's tastes (likes or dislikes). Note that these predictions are specific to the user, but use information gleaned from many users. This differs from the simpler approach of giving an average (non-specific) score for each item of interest, for example based on its number of votes.

In the more general sense, collaborative filtering is the process of filtering for information or patterns using techniques involving collaboration among multiple agents, viewpoints, data sources, etc. Applications of collaborative filtering typically involve very large data sets. Collaborative filtering methods have been applied to many different kinds of data including: sensing and monitoring data, such as in mineral exploration, environmental sensing over large areas or multiple sensors; financial data, such as financial service institutions that integrate many financial sources; or in electronic commerce and web applications where the focus is on user data, etc. The remainder of this discussion focuses on collaborative filtering for user data, although some of the methods and approaches may apply to the other major applications as well.

Collaborative filtering systems have many forms, but many common systems can be reduced to two steps:

1. Look for users who share the same rating patterns with the active user (the user whom the prediction is for).
2. Use the ratings from those like-minded users found in step 1 to calculate a prediction for the active user

This falls under the category of user-based collaborative filtering. A specific application of this is the user-based Nearest neighbor algorithm.

Alternatively, item based collaborative (users who bought *x* also bought *y*), proceeds in an item-centric manner:

1. Build an item-item matrix determining relationships between pairs of items
2. Infer the tastes of the current user by examining the matrix and matching that user's data

See, for example, the slope one item-based collaborative filtering family.

International Journal of Innovative Research in Science, Engineering and Technology

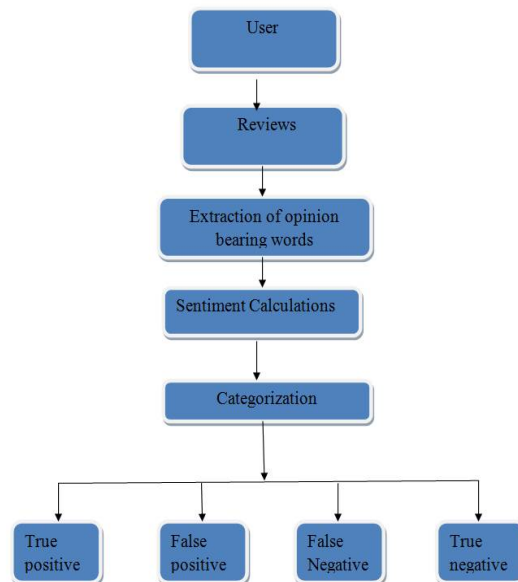
(A High Impact Factor, Monthly, Peer Reviewed Journal)

Visit: www.ijirset.com

Vol. 7, Special Issue 2, March 2018

Another form of collaborative filtering can be based on implicit observations of normal user behavior (as opposed to the artificial behavior imposed by a rating task). These systems observe what a user has done together with what all users have done (what music they have listened to, what items they have bought) and use that data to predict the user's behavior in the future, or to predict how a user might like to behave given the chance. These predictions then have to be filtered through business logic to determine how they might affect the actions of a business system. For example, it is not useful to offer to sell somebody a particular album of music if they already have demonstrated that they own that music.

Architecture:



Test cases:

Software system meets its requirements and user expectations and does not fail in an unacceptable manner. There are various types of test. Each test type addresses a specific testing requirement.

8.2.1 User New Registration

TEST CASE ID	TEST PLAN ID	TEST CASE DESCRIPTION	ACTUAL INPUT	ACTUAL OUTPUT	EXPECTED OUTPUT	STATUS
TC1	TP1	User registration New Account	User enter the all text field for correct Details	Your Account was Registered successfully	Your Account was Registered successfully	Success
TC2	TP1	Without filling text field	User wrong entered details	Display an error message "Please fill Out this field"	Your Account is Registered successfully	Fail
TC3	TP1	Input to invalid Email id	User mail id invalid mail id or already created	Display error message "Please Provide a valid Email id"	Your Account is Registered successfully	Fail

International Journal of Innovative Research in Science, Engineering and Technology

(A High Impact Factor, Monthly, Peer Reviewed Journal)

Visit: www.ijirset.com

Vol. 7, Special Issue 2, March 2018

8.2.2 Admin Product Upload and view Comments Results

TEST CASE ID	TEST PLAN ID	TEST CASE DESCRIPTION	ACTUAL INPUT	ACTUAL OUTPUT	EXPECTED OUTPUT	STATUS
TC1	TP2	Admin add Products	Product Upload	Your Upload was successfully	Upload was successfully	Success
TC2	TP2	Login a Invalid Admin name and Password	Login	Display an error message "Invalid User name and password"	Login was successfully	Fail
TC3	TP2	View Product Positive or Negative Comments overall Results	View Over all comments result Tagging	View The Results in Positive or Negative comments	View The Results in Positive or Negative comments	Success

8.2.3 User Buy the Products

TEST CASE ID	TEST PLAN ID	TEST CASE DESCRIPTION	ACTUAL INPUT	ACTUAL OUTPUT	EXPECTED OUTPUT	STATUS
TC1	TP3	User Buy the Product	Product Upload	Upload was successfully	Upload was successfully	Success
TC2	TP3	Login a Invalid Admin name and Password	User name or password incorrect	Display an error message "Invalid User name and password"	Login was successfully	Fail
TC3	TP3	View Product Positive or Negative Comments overall Results	View Over all comments result Tagging	View The Results in Positive or Negative comments	View The Results in Positive or Negative comments	Success

V. CONCLUSION

This project proposes a novel method for co-extracting opinion targets and opinion words by using a word alignment model. Our main contribution is focused on detecting opinion relations between opinion targets and opinion words., our method captures opinion relations more precisely and therefore is more effective for opinion target and opinion word extraction.

Next, we construct an Opinion Relation Graph to model all candidates and the detected opinion relations among them, along with a graph co-ranking algorithm to estimate the confidence of each candidate. The items with higher ranks are extracted out. The experimental results for three datasets with different languages and different sizes prove the effectiveness of the proposed method.

REFERENCES

- [1]F. Ricci, L. Rokach, B. Shapira, P.B. Kantor (Eds.), Recommender Systems Handbook, Springer, 2011, <http://www.springerlink.com/content/978-0-387-85819-7>.
- [2]M. Deshpande, G. Karypis, Item-based top-N recommendation algorithms, ACM Trans. Inf. Syst. 22(1) (2004) 143–177, <http://dx.doi.org/10.1145/963770.963776>.
- [3]Y. Koren, R.M. Bell, C. Volinsky, Matrix factorization techniques for recommender systems, IEEE Comput. 42(8) (2009) 30–37, <http://dx.doi.org/10.1109/MC.2009.263>.



ISSN(Online): 2319-8753
ISSN (Print): 2347-6710

International Journal of Innovative Research in Science, Engineering and Technology

(A High Impact Factor, Monthly, Peer Reviewed Journal)

Visit: www.ijirset.com

Vol. 7, Special Issue 2, March 2018

- [4]R. Salakhutdinov, A. Mnih, Probabilistic matrix factorization, in: Advances in Neural Information Processing Systems 20, Proceedings of the Twenty-First Annual Conference on Neural Information Processing Systems, Vancouver, British Columbia, Canada, December 3–6, 2007, 2007, pp.1257–1264, <http://papers.nips.cc/paper/3208-probabilistic-matrix-factorization>.
- [5]A.I. Schein, A. Popescul, L.H. Ungar, D.M. Pennock, Methods and metrics for cold-start recommendations, in: Proceedings of the 25th Annual International ACM SIGIR Conference on Research and Development in Information Retrieval, SIGIR 2002, August 11–15, 2002, Tampere, Finland, 2002, pp.253–260.